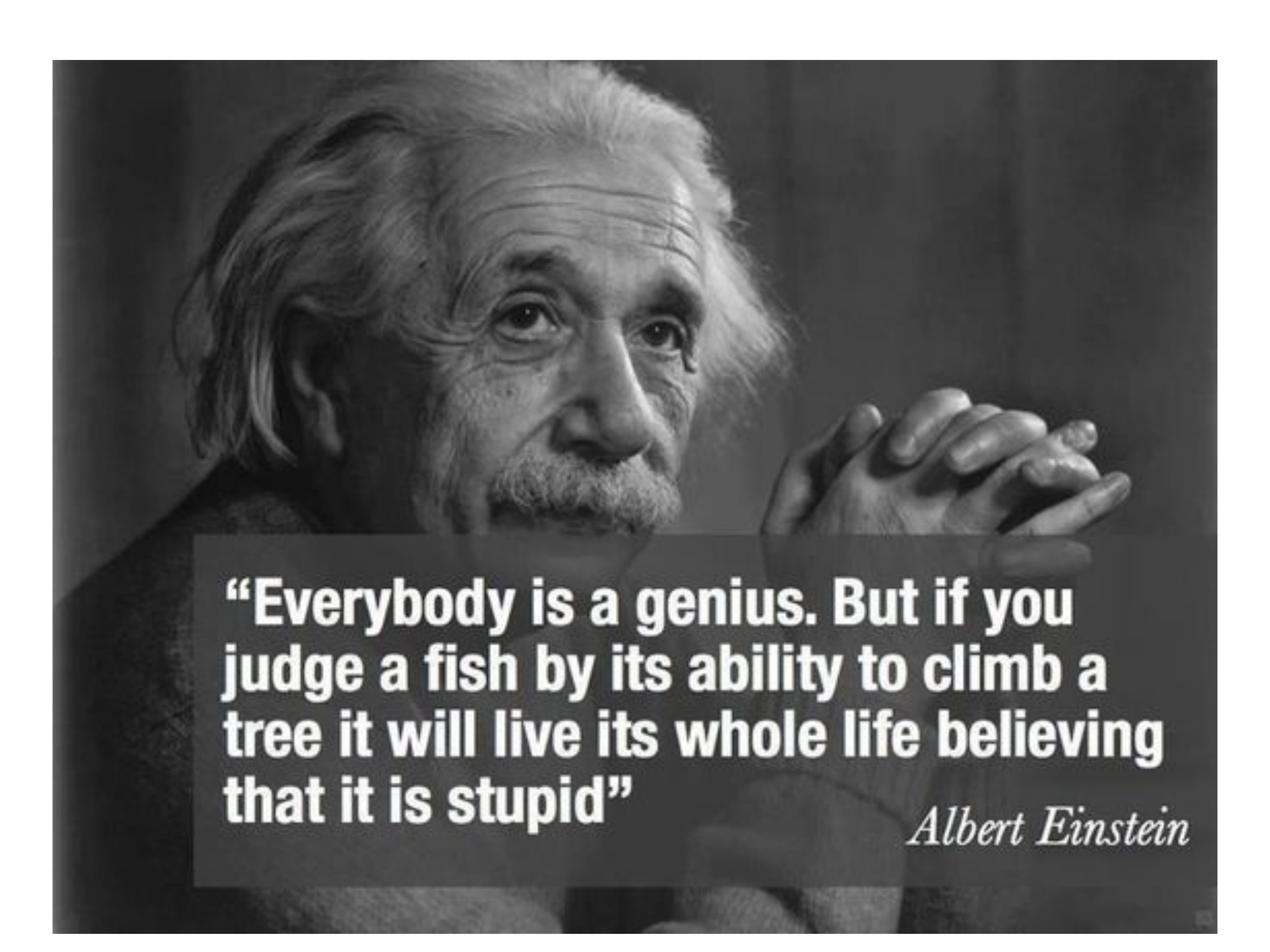


# Welcome

Presenter: Gary Hoey



A black and white portrait of Albert Einstein. He is shown from the chest up, looking slightly to the right of the camera with a thoughtful expression. His hands are clasped together in front of him. The background is dark and out of focus.

**“Everybody is a genius. But if you judge a fish by its ability to climb a tree it will live its whole life believing that it is stupid”**

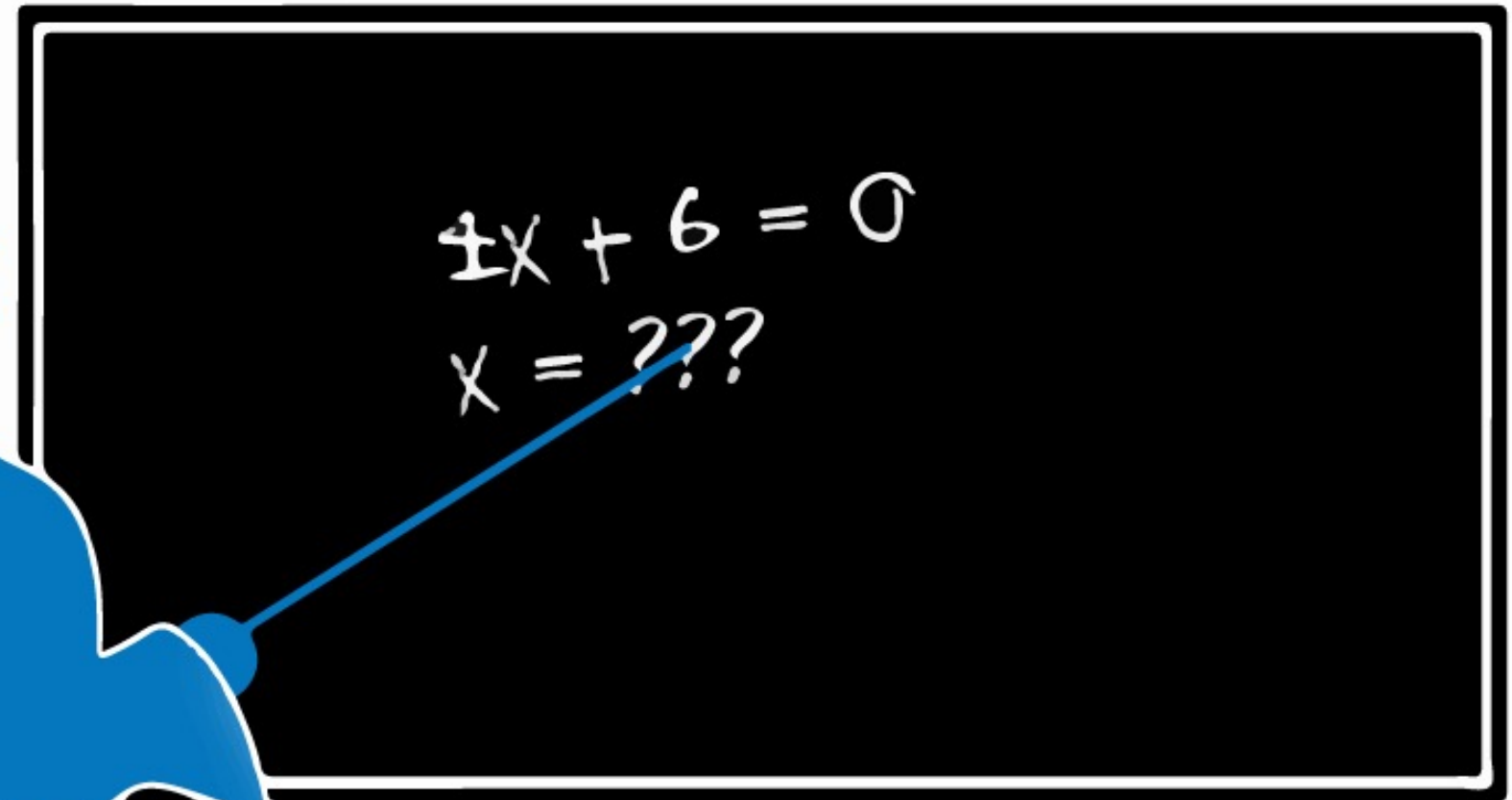
*Albert Einstein*

# Our History

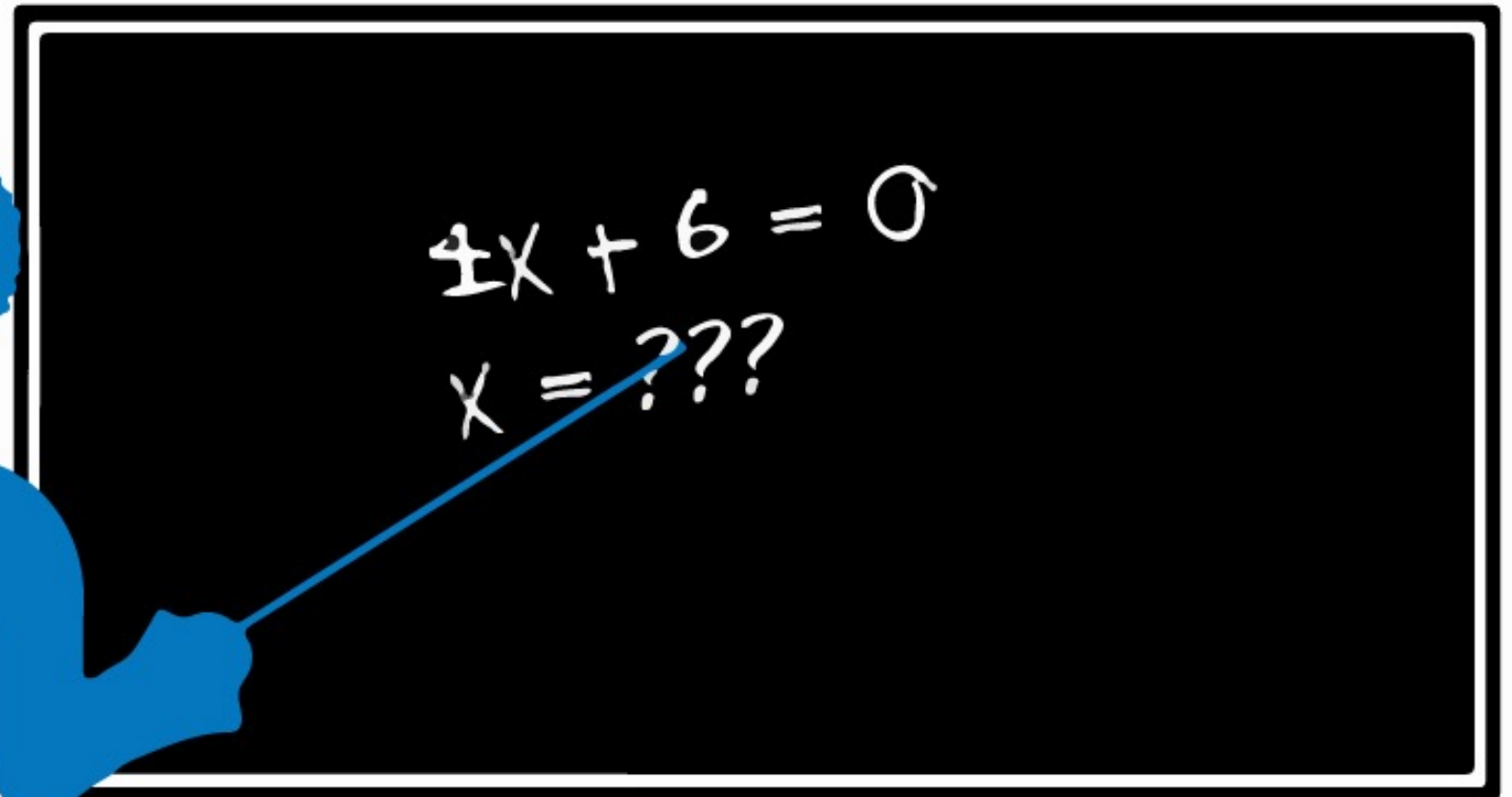
# Spot the Difference

A look at the evolution of teaching through the decades

# 1950

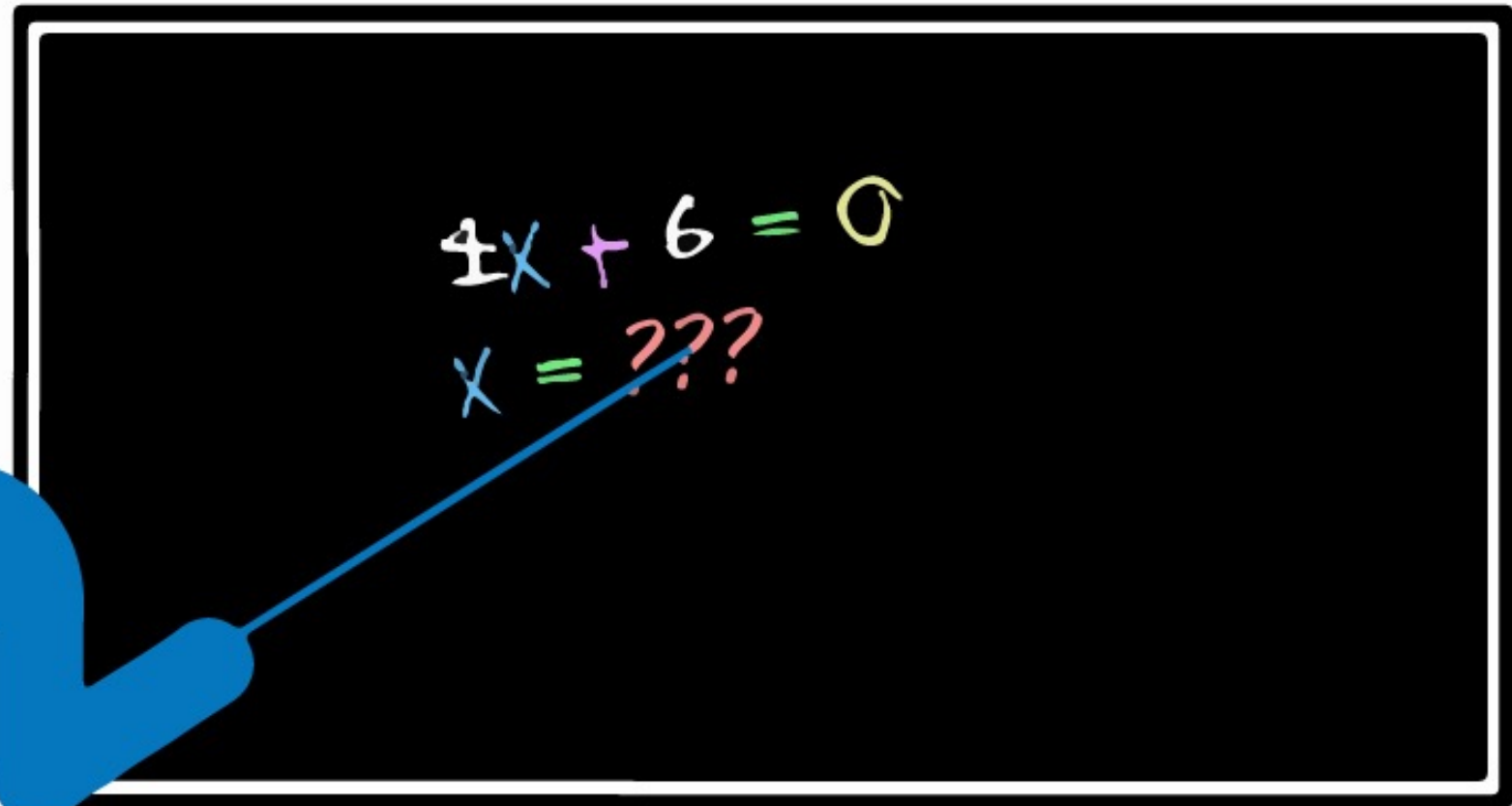
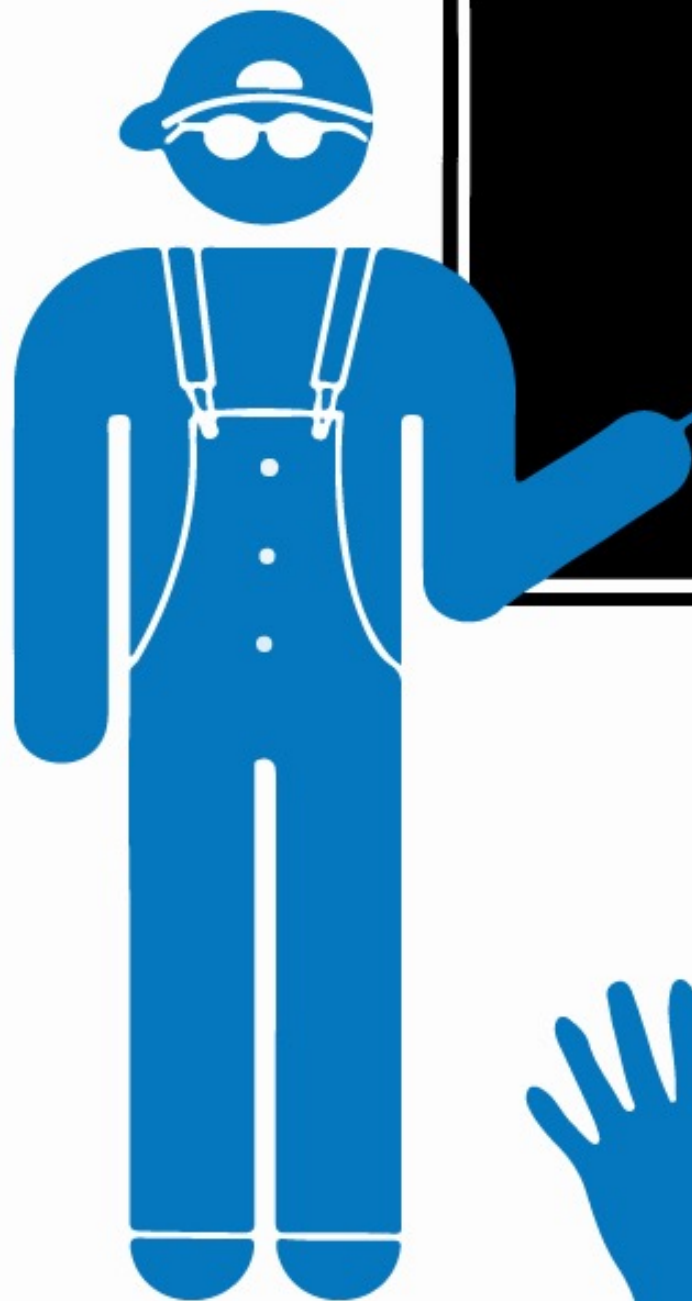


# 1970

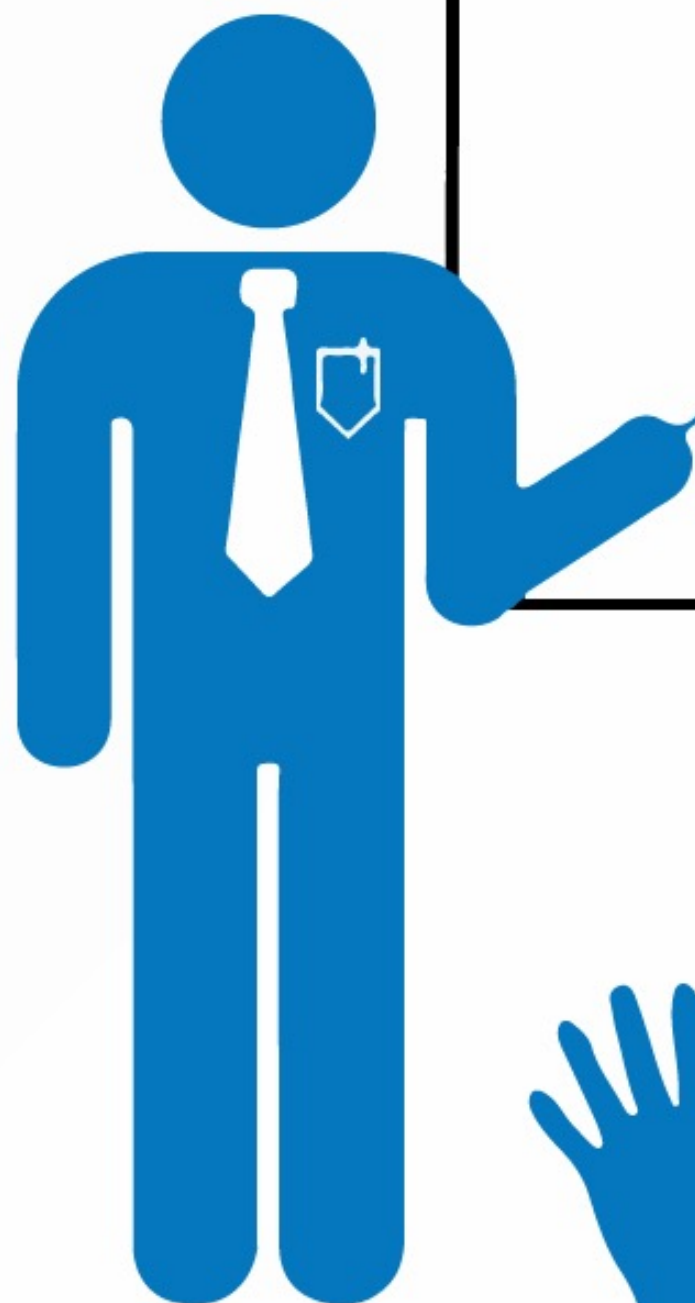




# 1990



# 2000



$$4X + 6 = 0$$
$$X = ???$$

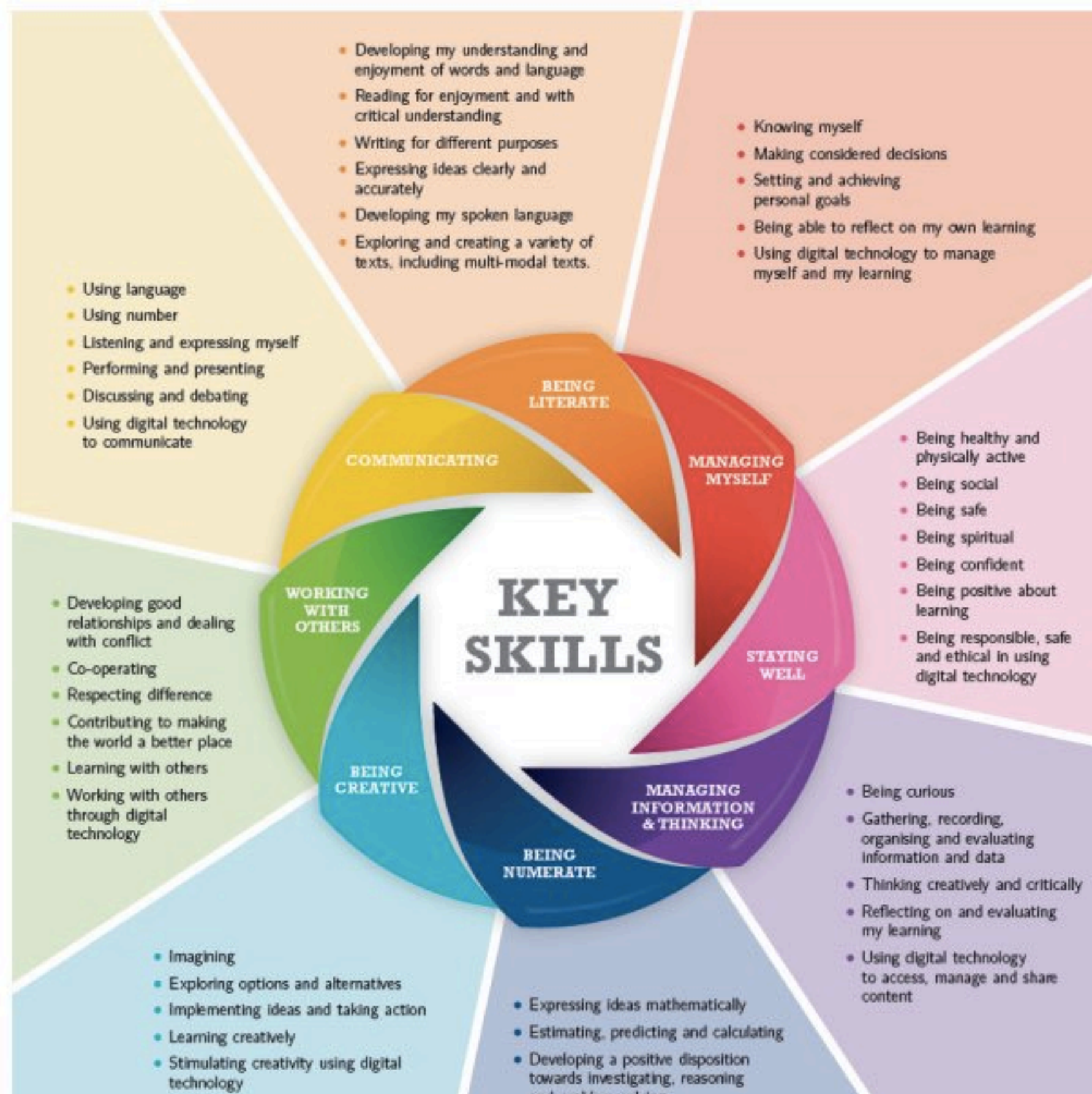




# TODAY



# Introduction of new Junior Cycle



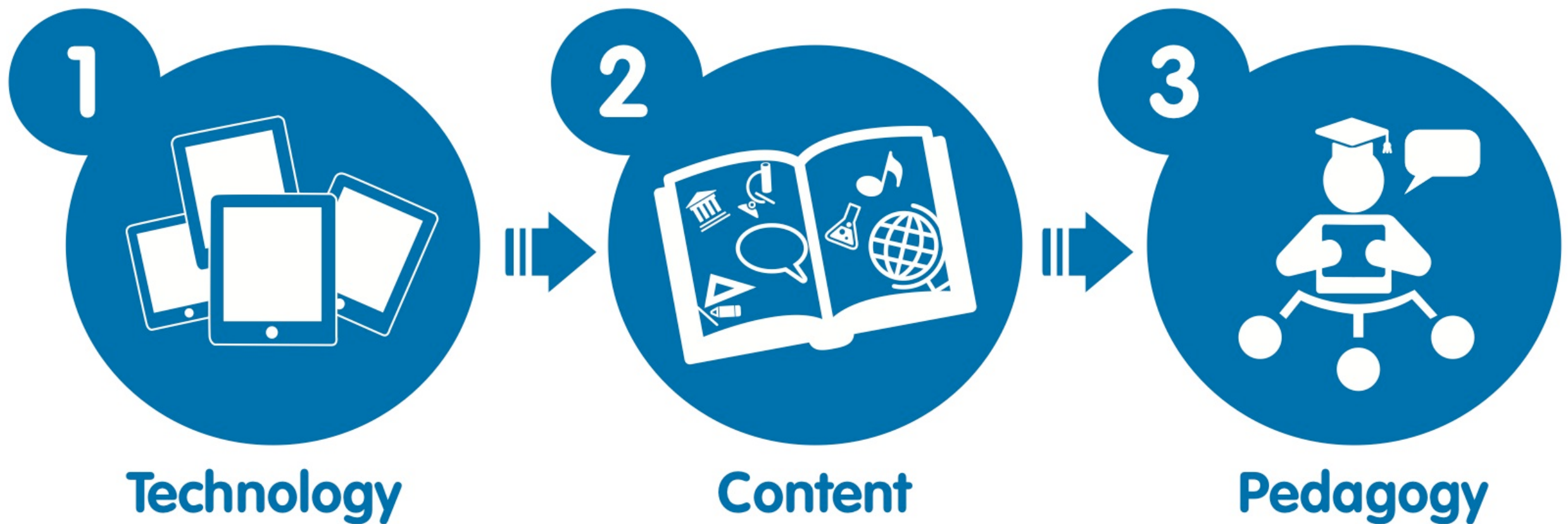
The background features a collection of decorative elements. On the left, there are several clusters of colorful, irregular geometric shapes in shades of teal, orange, yellow, and purple. On the right, a semi-circular arrangement of blue line-art icons represents various fields of study: science (microscope, beaker, globe, molecular structure), mathematics (ruler, compass, triangle), literature (books), and technology (laptop).

# How Wriggle Works



# Wriggle 1:1 Mobile Learning

Success factors for using technology in education



**Source:** Koehler, M.J. & Mishra, P., 2005. What happens when teachers design educational technology?

**Wriggle** is a 1:1 mobile learning programme that will transform teaching and learning in schools by putting new technology and engaging content into the hands of every student





# Question

**QUESTION: When can we expect 1st years of 2019 to enter the workplace?**

**ANSWER:**

**10 Years**

**Wriggle** is a 1:1 mobile learning programme that will transform teaching and learning in schools by putting new technology and engaging content into the hands of every student



# Question

**A. What is the biggest hotel chain in the world**



**B. What is the biggest taxi firm in the world**

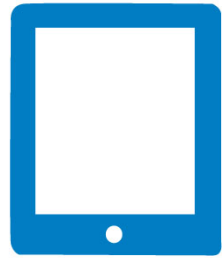


**C. What is the biggest source of news in the world**



# Wriggle 1:1 Mobile Learning

## Elements of the Wriggle bundle



### Mobile Device

A touch-screen tablet computer



### Parents Training

Training for you as the parent of a student with a mobile device



### Deployment

Induction workshops to get students and staff familiar with their new devices



### CPD for Teachers

Supporting teachers transform their teaching and learning environment



### Service & Support

Helpdesk, device management and infrastructure support



### Finance & Insurance

Options to spread costs and insure against risks

**Wriggle** is a 1:1 mobile learning programme that will transform teaching and learning in schools by putting new technology and engaging content into the hands of every student





# Safety and why no BYOD?

- Child Protection & Security

- Support

- Discounted iPad Pricing

# Costings

## Bundle Breakdown

	Price
Device (iPad 32GB)	€345
Case	€45
Wriggle Services & Support	€99
Books & eBooks	€331 Approx.
Total	€820 Approx.
Insurance (Optional)	€6p/m Approx.

**Wriggle** is a 1:1 mobile learning programme that will transform teaching and learning in schools by putting new technology and engaging content into the hands of every student



# Importance of a Heavy Duty Protective Case

MAXCASES

Shield Xtreme-S for Apple iPad



Military Grade Triple Protection Case

# What Happens Next

---

Online Store & Deployment

---

# Important Dates

Online Store Opens

tbc

Online Store Closes

tbc

Deployment (Students get their device) 26th Aug.



# Question

**QUESTION: When can we expect 1st years of 2019 to retire?**

**ANSWER:**

**2074**

**Wriggle** is a 1:1 mobile learning programme that will transform teaching and learning in schools by putting new technology and engaging content into the hands of every student



Thank You

