

# MAKING A CHOICE



## A GUIDE TO SENIOR CYCLE OPTIONS

## *Making a Choice—A Guide to Senior Cycle Options*

Dear Parents/Students,

The purpose of this booklet is to help you make well-considered choices as you advance into the Senior Cycle of second level education.

Holy Family Community School offers three pathways after the Junior Certificate:

- Transition Year (TY)
- Traditional Leaving Certificate/ LCVP
- Leaving Certificate Applied (LCA)

Some useful websites to guide you in your research may be:

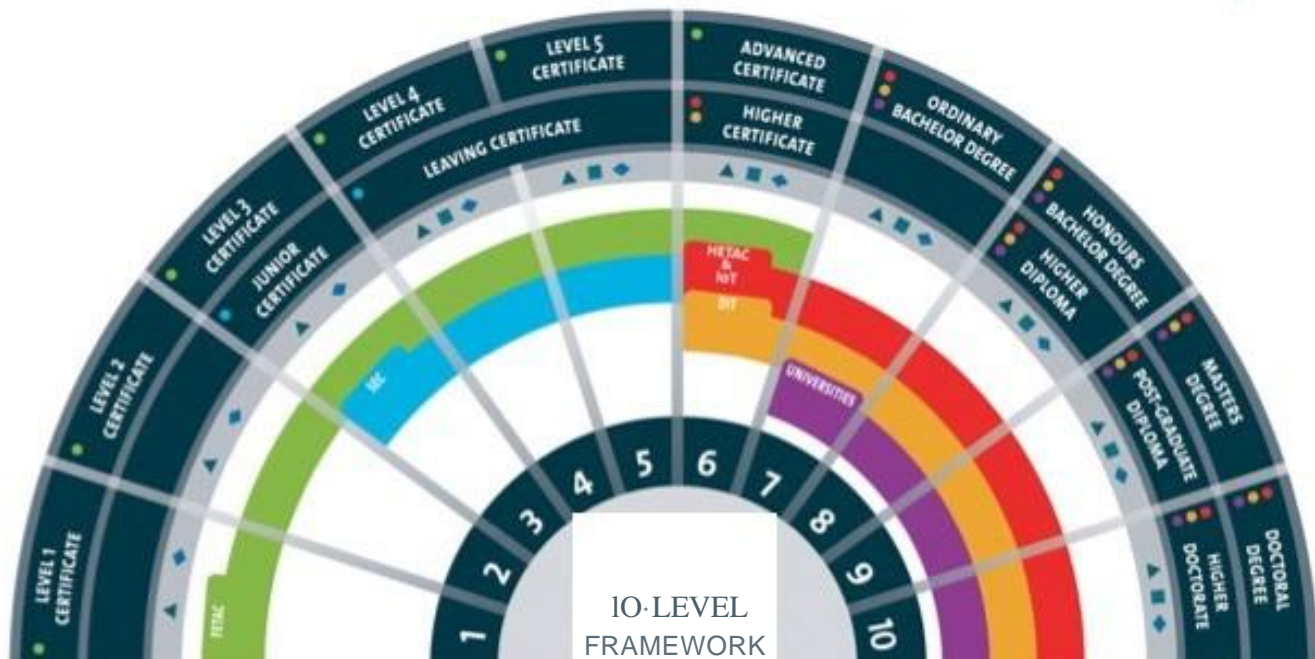
- ⇒ [careersportal.ie](http://careersportal.ie)
- ⇒ [qualifax.ie](http://qualifax.ie)
- ⇒ [cao.ie](http://cao.ie)
- ⇒ [ncca.ie](http://ncca.ie)
- ⇒ [fetch.ie](http://fetch.ie)
- ⇒ [ucd.ie](http://ucd.ie)
- ⇒ [maynoothuniversity.ie](http://maynoothuniversity.ie)
- .....etc



# NATIONAL FRAMEWORK OF QUALIFICATIONS

Udaras Naisiunta  
Cailiochtaf na hÉireann

National Qualifications  
Authority of Ireland



## Subject choice for the Leaving Certificate

This is a two year programme of general education. It is not a preparation for any one job or career. Students take 7 exam subjects; three compulsory (English, Irish, Maths) and four optional.

### OPTIONAL SUBJECTS:

#### **Business Group**

Accounting  
Business  
Economics

#### **Language Group**

French  
German

#### **Scientific Group**

Biology  
Chemistry  
Physics  
Home Ec  
LCPE



#### **Social Studies Group**

History  
Geography  
Art  
Music  
Politics and Society

#### **Applied Science/Technology Group**

Construction Studies  
Engineering  
Design and Communication Graphics  
Computer Science

# CAREERSPORTAL.ie

Ireland's Leading Career Guidance Website



Your marks %

HIGHER LEVEL		ORDINARY LEVEL	
<b>100</b> points	<b>H1</b>	90-100	<b>O1</b> 56 points
<b>88</b> points	<b>H2</b>	80-89	<b>O2</b> 46 points
<b>77</b> points	<b>H3</b>	70-79	<b>O3</b> 37 points
<b>66</b> points	<b>H4</b>	60-69	<b>O4</b> 28 points
<b>56</b> points	<b>H5</b>	50-59	<b>O5</b> 20 points
<b>46</b> points	<b>H6</b>	40-49	<b>O6</b> 12 points
<b>37</b> points	<b>H7</b>	30-39	<b>O7</b> 0 points
<b>0</b> points	<b>H8</b>	0-29	<b>O8</b> 0 points

**+25**  
points *Bonus Points for H1-H6 Maths*

LCVP LINK MODULES	
Distinction	<b>66</b> points
Merit	<b>46</b> points
Pass	<b>28</b> points

## CAO Points Calculators

**FREE!**

Use online or get the App!



Above details refer to students sitting the Leaving Certificate from 2017 onwards only.  
Students who sat the Leaving Certificate before 2017 will be awarded 25 points for an E grade (25-39%) at Higher Level under the new grading scheme.

[www.careersportal.ie](http://www.careersportal.ie)

[www.saolibre.ie](http://www.saolibre.ie)

## **Making a Choice**

In choosing your subjects for Leaving Cert. **YOU MUST TAKE:**

\* English                      \* Irish                      \* Maths                      \* Religion                      \* P.E.

**You must choose a further 4 subjects from the following list of 19:**

* Art	* Music	* History
* Home Economics	* German	* Geography
* Chemistry	* Biology	* Business
* Economics	* Engineering	* French
* Accountancy	* Physics	* Politics
* Design & Communication Graphics	* Construction Studies	
* Computer Science		
* LCPE		

- ⇒ As a general rule, you should choose subjects that you are good at and that you like.
- ⇒ Subjects can be studied at Ordinary or Higher level.
- ⇒ Your test results to date will help you to choose the level which is most suitable for you in each subject. Also consult teachers and parents.
- ⇒ If you are interested in studying a specific Third Level course in the future, take care to choose any subjects which are compulsory for entry to this course. Some of this information is outlined in this booklet.



**A good general guide for your choice would be to include:**

- 1 Science subject (Physics, Chemistry, Biology) because you widen your choice later at Third Level.
- 1 foreign language (if you have studied one at Junior Cert.) as a European language is required for entry into many Third Level courses.

### **Courses at Third Level**

- Level 5 Post Leaving Cert Courses - Available at Colleges of Further Education. Usually 1 year.
- Level 6 Higher Certificate Courses - Available at Colleges of Further Education and Technological Universities. Usually 2 years.
- Level 7 Ordinary Degree Courses - Available at Technological Universities and some Universities. Usually 3 years.
- Level 8 Honours Degree Courses - Available at Universities and Technological Universities. Usually 3 to 6 years depending on the degree.



#### **Some recent guideline points**

##### **LEVEL 8- HONOURS DEGREE**

<b>Arts - UCD</b>	<b>400</b>
<b>Arts - Maynooth</b>	<b>336</b>
<b>Science - UCD</b>	<b>566</b>
<b>Primary Teaching - Maynooth</b>	<b>540</b>
<b>Nursing - UCD</b>	<b>451</b>
<b>Computer Science - Maynooth</b>	<b>410</b>
<b>Engineering – TUD City Centre</b>	<b>476</b>

##### **LEVEL 6 & 7 ORDINARY DEGREE/HIGHER CERTIFICATE**

<b>Mechanical Engineering – TUD Tallaght</b>	<b>170</b>
<b>Business - TUD Tallaght</b>	<b>232</b>
<b>Marketing – TUD City Centre</b>	<b>251</b>

**PLEASE NOTE: Points vary from year to year - they do not stay exactly the same for every course in every college.**

**There are TWO types of requirements for Third Level colleges – College Requirements and Course Requirements. Take care to check both.**

**Some general points to note with reference to entry requirements are:**

The minimum requirement for entry to most university courses is 2 H5s and 4 O6s or H7s. For Trinity College in particular, 3H5s and 3 O6s or H7s are needed.  
IT Level 6 and Level 7 courses require a minimum of FIVE subjects.

**MOST QUERIES ARISE IN RELATION TO IRISH, LANGUAGES, MATHS AND SCIENCES**

**IRISH**

- Students must obtain an O6 or H7 grade in Irish for entry to the following colleges: UCD, UCC, UCG, Maynooth.
- It is not essential to pass Irish for courses in TCD, DCU, UL or TUDs.
- Higher Level Irish is essential for **ALL** Primary Teaching courses and at least a H4 grade is required.

**LANGUAGES**

- A foreign language is essential for entry to the following colleges:  
UCD (all faculties except Engineering and Science), UCG, UCC, UL,  
Maynooth (all faculties except Engineering and Science), RCSI,  
NCAD



## MATHS

- Maths at Leaving Certificate is offered at THREE levels: Higher/Ordinary/Foundation.
- Foundation Maths is generally not accepted for Third Level Colleges. However, some TUs have begun to accept Foundation Maths in recent years.
- A pass in Maths at Ordinary Level is very important at Leaving Cert.
- Students must pass Maths for entry to the following colleges: TCD, DCU, UL, TUs (almost all courses), Colleges Of Further Education (almost all courses).
- Maths is also needed for the Gardaí.
- Maths is not required for entry into Arts or Law in UCD, UCC, UCG and Maynooth but is needed for all other faculties.

## HONOURS MATHS

- A H3 or H4 in Maths is required for some courses:
  - Maths in all universities.
  - Computer Science, Linguistics and German, Management Science in TCD.
  - a H2 required for Actuarial/Financial Studies in UCD
  - All Honours Engineering Degrees in all Universities and TUs.
- Honours Maths is not required to study Engineering at Level 6 or Level 7 in Technological Universities. Ordinary Level Maths is usually acceptable but some will want more than an O6.

## SCIENCE

- At least ONE science subject is essential for all Science based degree courses such as Science, Medicine (some courses require two), Engineering, Architecture, Physiotherapy, Radiography.
- Dentistry requires TWO Science subjects for entry (TCD)
- Science is also strongly recommended for Beauty Therapy and Sports Courses
- Physics is also strongly recommended for anyone considering studying Engineering at Third Level and is very useful for Computer Science
- **A Science subject is also necessary for entry to Nursing** – it does not have to be Biology
- Speech Therapy, Health Inspection and Laboratory Technician courses all require at least one Science subject.
- Chemistry is essential for some Medicine courses, Veterinary Medicine, Dietician and Pharmacy courses.
- Science courses in TCD require two Science subjects; however, Geography, Computer Science or Applied Maths are accepted as second Science subjects

## OTHER OPTIONS AFTER LEAVING CERTIFICATE

### APPRENTICESHIP

- ⇒ Many students are interested in finding an apprenticeship after Leaving Certificate. The basic requirement for a recognised apprenticeship is 5 O6s in Junior Certificate. In practice, however, **almost 80% of apprentices now have a Leaving Cert. or Leaving Cert. Applied**
- ⇒ With the regular Leaving Certificate, the subject grades employers will look closely at for apprenticeship are **Maths** and **practical subjects** such as Engineering, Construction Studies or Technical Drawing
- ⇒ LCA is accepted for apprenticeships
- ⇒ Apprenticeships last anywhere from 2-4 and a half years. There are regular **exams** and **continuous assessments** along the way. Students with a good Leaving Certificate rarely have difficulties with these exams. Those with Junior Certificate only, however, frequently find it difficult to succeed and may have to repeat a number of times or may have their apprenticeships terminated.

### **POST LEAVING CERTIFICATE COURSES – PLCs**

- ⇒ There are one or two year courses in Colleges of Further Education such as Crumlin, Ballyfermot, Inchicore and Pearse College. They are a combination of **work experience** and **courses of study** in a particular area, e.g.: Computers, Childcare, Social Care, Tourism, Business to name but a few.
- ⇒ A large number of PLC courses now have links with Third Level institutions so that students may continue their studies if they achieve certain grades at PLC level.
- ⇒ Entry requirements for most PLC courses is **5 O6s at Leaving Certificate** plus an **interview**. Some require one or two honours grades.
- ⇒ Some courses will look closely at levels/grades in particular subjects. For example, most **Computer courses** will expect students to have passed **Ordinary Level Maths**, while **Beauty Therapy courses** will expect at least a pass in **Biology** or **Home Economics**.
- ⇒ **LCA** is accepted for almost all PLC courses, although some may require a **Merit Level** for entry.

# Leaving Certificate

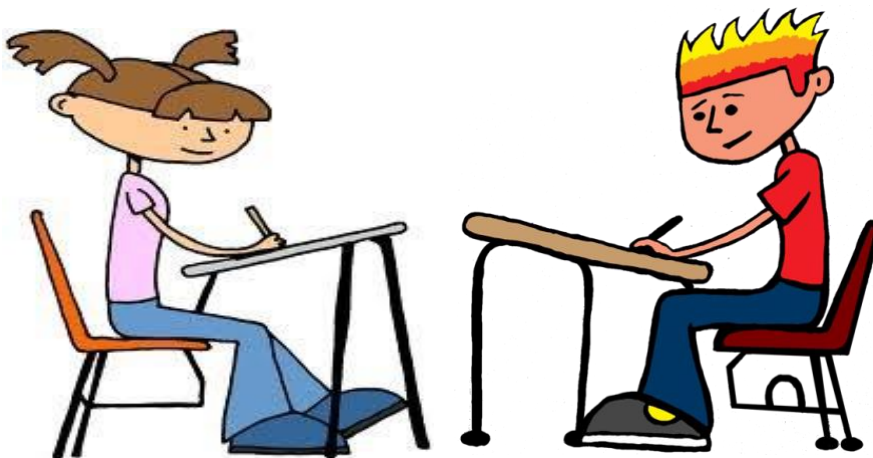


**Core subjects** English, Irish, Maths

**Options subjects** Students must choose 4 subjects from the list below.

French / German / Construction Studies / Engineering /  
DCG / Art / Home Economics / Physics / Chemistry /  
Biology / History / Geography / Economics / Business /  
Accountancy / Music / Politics & Society/Computer  
Science/LCPE

## Leaving Cert. Vocational Programme (LCVP)



This is aimed at students who have a vocational emphasis in their subject choices. The decision to follow the LCVP route will only be taken when subject choices have been made. It is an ideal course for students who will be taking around 3 to 5 Higher Level subjects in their Leaving Cert. The LCVP programme combines the academic strengths of the Leaving Cert with a new and dynamic focus on self directed learning, enterprise, work and the community.

The primary goal of the LCVP program is to prepare young people for the world of work. Throughout the programme students are encouraged to:

- ◇ Be innovative and enterprising
- ◇ Take responsibility for their own learning
- ◇ Adapt to changing circumstances
- ◇ Evaluate data and devise solutions to problems
- ◇ Communicate their thoughts and ideas effectively
- ◇ Work with others as part of a team
- ◇ Investigate and plan career options
- ◇ Use information and communication technologies
- ◇ Investigate local business and community enterprises

These skills and qualities are equally relevant to the needs of those preparing for further education, seeking employment or planning to start their own business.

The strong vocational focus of the LCVP programme is achieved by providing two additional courses of study in Work Preparation and Enterprise, known as link modules.

Topics such as work placements, career investigations, mini-enterprises, business and community visits are an integral part of the programme.

The LCVP link modules are assessed through coursework and exams with points awarded based on the achievement levels.

Distinction 66 points

Merit 46 points

Pass 28 points

### **PROGRAMME REQUIREMENTS**

Requirements for the Leaving Certificate Vocational Programme, which is of two years duration, are as follows:

- \* LCVP students must take a minimum of five Leaving Certificate subjects (at Higher, Ordinary or Foundation level) including Irish.
- \* They must study the two Link Modules, namely Preparation for the World of Work and Enterprise Education.
- \* Students must be certain that the path they wish to follow after school does not require a 3<sup>rd</sup> language (French or German). This must be discussed with a Guidance Counsellor.

# FRENCH

## SYLLABUS

There are THREE sections for examination:

### 1. Oral

- ◆ General conversation
- ◆ Presentation of postcard or photo

### 2. Aural

- ◆ Interviews
- ◆ Dialogues
- ◆ News reports
- ◆ Weather forecasts...etc.

### 3. Written

- ◆ Grammar
- ◆ Reading comprehensions
- ◆ Written expressions

## EXAMINATION

**15 minute oral** in March or April

– 25% HL, 20% OL

**2 1/2 hour written exam** in June

– 55% HL/OL

**40 minute aural exam** in June

– 20% HL, 25% OL



## RECOMMENDATIONS

A language is a slowly acquired subject, not something you can swot at the last minute. Therefore, students taking a modern language for Leaving Certificate should:

- Be good attenders
- Be willing to do homework on a regular basis
- Be attentive in class
- Have at least a H6 grade at Higher Level Junior Certificate

## REQUIREMENTS FOR COURSE

Matriculation in a foreign language is required for entry into UCD, DCU, UL, UCG, Maynooth.

## POSSIBLE CAREER OPTIONS

- ⇒ Arts degree
- ⇒ Teaching
- ⇒ Translation
- ⇒ Business
- ⇒ International Studies

# GERMAN

## SYLLABUS

There are THREE sections for examination:

### 1. Oral

- ◆ General conversation
- ◆ Storyboards
- ◆ Role-plays

### 2. Aural

- ◆ Interviews
- ◆ Dialogues
- ◆ News reports
- ◆ Weather forecasts...etc.

### 3. Written

- ◆ Grammar
- ◆ Reading comprehensions
- ◆ Written expressions

## EXAMINATION

**15 minute oral** in March or April

– 25% HL, 20% OL

**2 1/2 hour written exam** in June

– 55% HL/OL

**40 minute aural exam** in June

– 20% HL, 25% OL



## RECOMMENDATIONS

A language is a slowly acquired subject, not something you can swot at the last minute. Therefore, students taking a modern language for Leaving Certificate should:

- Be good attenders
- Be willing to do homework on a regular basis
- Be attentive in class
- Have at least a H6 grade at Higher Level Junior Certificate

## REQUIREMENTS FOR COURSES

Matriculation in a foreign language is required for entry into UCD, DCU, UL, UCG, Maynooth.

## POSSIBLE CAREER OPTIONS

- \* Arts degree
- \* Teaching
- \* Translation
- \* Business
- \* International Studies



# GEOGRAPHY



## SYLLABUS

There are THREE sections for examination:

1. Physical Geography
2. Regional Geography
3. Geographic Investigation and Skills

## **Electives**

- ◆ Economic Activities

OR

- ◆ Human Environment

## **Options (Higher Level only)**

- ◆ Global Interdependence

OR

- ◆ Culture Identification

## EXAMINATION

**2 and a half hours** (with 20 minute optional extra)

Written paper 80%

Geographical Investigation 20%

(To be submitted by April of exam year)

## RECOMMENDATIONS

Geography is a cross-curricular subject requiring a number of skills including:

- Analysis of data
- Presentation of data
- Map interpretation
- Identification of physical landforms
- Identification and description of national and international regions
- The completion of a geographical investigation involving fieldwork

## REQUIREMENTS FOR COURSES

None

## POSSIBLE CAREER OPTIONS

- \* Arts degree
- \* Geology
- \* Meteorology
- \* Town Planning
- \* Environmental Studies
- \* Teaching
- \* Science degree
- \* Pharmacy

# HISTORY



## SYLLABUS

Students will study 5 topics:

- ◆ 2 topics from Irish history
- ◆ 2 topics from European history
- ◆ Students will also produce a **Research Study** on an important historical subject

## EXAMINATION

**2 1/2 hours** (with 20 minute optional extra)

- Written paper 80%
- 4 questions each worth 100 marks
- Research Study 20%

(Submitted before final exam in June)

## RECOMMENDATIONS

A good standard of English is required. The below skills will be learnt, but students should also be able to:

- Communicate effectively
- Support their point of view or argument with evidence
- Think independently

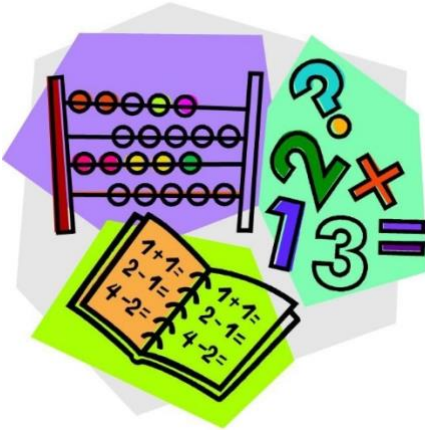
## REQUIREMENTS FOR COURSES

None

## POSSIBLE CAREER OPTIONS

- \* Arts degree
- \* Teaching
- \* Law
- \* Journalism
- \* Research
- \* Politics
- \* Accountancy

# ACCOUNTING



## SYLLABUS

- ◆ Financial Accounts
  - Trading
  - Profit & Loss
  - Balance Sheet
- ◆ Bank Reconciliation Statements
- ◆ Control Accounts
- ◆ Tabular Statements
- ◆ Incomplete Records
- ◆ Ratio Analysis
- ◆ Management Accounting

## EXAMINATION

**3 hour written paper in June** – for both Higher and Ordinary levels

## RECOMMENDATIONS

Students should:

- Be good attenders
- Be willing to do homework on a regular basis
- Be attentive in class
- While exceptional maths skills are not required, students should be good with figures
- Conscientious and thorough as the subject requires detailed analysis of figures and data

## REQUIREMENTS FOR COURSES

None

## POSSIBLE CAREER OPTIONS

- \* Accounting
- \* Banking
- \* Bookkeeping
- \* Clerical work
- \* Marketing
- \* Advertising
- \* Computers

# ECONOMICS



## **SYLLABUS**

Economics looks at how we get our incomes, how we use them, the supply of resources and the production and exchange of goods and services.

### **Topics include:**

- ◆ Production and Consumption
- ◆ Economic System and Economic Thought
- ◆ Demand and Supply
- ◆ Prices and Output
- ◆ Factor Incomes
- ◆ Determination of National income and its fluctuations
- ◆ Money and Banking
- ◆ The Government in the Economy
- ◆ Inflation
- ◆ International Trade and Payments
- ◆ Economics of Population
- ◆ Economic Growth and Development

**EXAMINATION:** 2.5 hour paper in June for both HL and OL.

Exam divided into 2 sections - One section of short questions (worth 100 marks) and one section of long questions (worth 300 marks)

You must answer 6 of the 9 questions in Section A and 4 of the 8 questions in Section B.

## **RECOMMENDATIONS**

Students should:

- Have enjoyed Junior Certificate Business studies
- Have an interest in current affairs

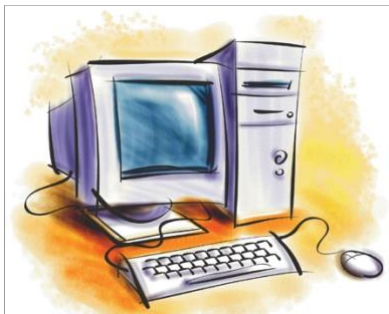
## **REQUIREMENTS FOR COURSES**

None

## **POSSIBLE CAREER OPTIONS**

- \* Business
- \* Finance
- \* Stock brokering
- \* Investment banking
- \* Insurance
- \* Law
- \* Management

# COMPUTER SCIENCE



## **SYLLABUS**

Computer Science looks at how programming and computational thinking can be applied to the solution of problems and how computing and technology impacts the world around us.

### **Topics include:**

- ⇒ Computers and Society
- ⇒ Creative Design (web pages, games, apps, robotic systems...etc)
- ⇒ Abstraction
- ⇒ Logic
- ⇒ Algorithms
- ⇒ Computer Systems
- ⇒ Programming languages
- ⇒ Reading, writing, testing and modifying computer programs...etc

## **EXAMINATION:**

2.5 hour paper in June for both HL and OL. This will be a computer-based exam broken up into two sections. The entire exam will be worth 70% of your overall grade.

The remaining 30% of your grade will be achieved through a Coursework Assessment.

## **RECOMMENDATIONS**

Students should:

- Be critical and creative thinkers
- Have a passion for technology
- Enjoy problem solving
- Like independent research

## **REQUIREMENTS FOR COURSES**

None yet

## **POSSIBLE CAREER OPTIONS**

- \* App Developer
- \* Cloud Specialist
- \* Cybersecurity
- \* Games Designer
- \* IT Consultant/Manager/Trainer
- \* Software Developer

# LCPE



## SYLLABUS

There are two strands to this course. One is centred around physical activity (eg: Aquatics, Athletics, Adventure Activities...etc).

The second strand will be classroom based and will examine topics such as:

### **Topics include:**

- ◆ Promoting physical activity
- ◆ Ethica and fair play
- ◆ Technology, media and sport
- ◆ Gender and physical activity...etc

## REQUIREMENTS FOR COURSES

None yet

## EXAMINATION:

2.5 hour paper in June for both HL and OL. This exam will be worth 50% of your overall grade.

20% of your grade will be based on completing a Physical Activity Project (PAP) that will be done in 6th Year.

The remaining 30% of your grade will be achieved based on a Performance Assessment.

## RECOMMENDATIONS

Students should:

- Enjoy active participation in physical activity
- Be able to manage their own learning and self-motivate
- Have great communication skills and be able to work well with others
- Like being involved in class discussions and debate

## POSSIBLE CAREER OPTIONS

- \* Coach
- \* Dietitian
- \* Personal Trainer
- \* Lifeguard
- \* Physiotherapist
- \* Sport Psychologist
- \* PE Teacher

# BUSINESS

## SYLLABUS

- ◆ **People in Business**
  - Managers
  - Investors
  - Producers
  - Suppliers
  - Trade Unions
  - Entrepreneurs
- ◆ **Management Skills**
  - Leadership
  - Motivation
  - Communications
- ◆ **Management Activities**
  - Insurance
  - Taxation
  - Marketing
  - Finance
- ◆ **Business Structures**
  - Sole Traders
  - Private Limited Companies
  - Public Limited Companies
- ◆ **Government Involvement in Business**
- ◆ **International Trade**
- ◆ **European Union**
  - Structures
  - Workings
  - Policies



## EXAMINATION

**3 hour written paper in June –Higher level**

**2½ hour written paper in June – Ordinary level**

## RECOMMENDATIONS

Students should:

- Be good attenders
- Be willing to do homework on a regular basis
- Be attentive in class
- Be willing to work hard

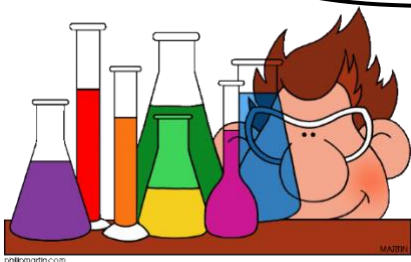
## REQUIREMENTS FOR COURSES

None

## POSSIBLE CAREER OPTIONS

- \* Banking
- \* Insurance
- \* Marketing
- \* Advertising
- \* Bookkeeping
- \* Clerical Work

# CHEMISTRY



## SYLLABUS

The syllabus has both **Practical** and **Theoretical** components.

- ◆ There are 28 mandatory experiments which must be written up in a practical notebook and be available in the school for possible inspection.
- ◆ The theoretical section of the course includes history of the development of Atomic Theory and develops more fully aspects of the Junior Cert. course. There is a detailed examination of the Periodic Table and Atom, detailed chemical analysis and organic chemistry (eg: drugs, plastics, how the breathalyser works, water analysis... etc)
- ◆ It fosters a more in-depth understanding of Chemistry and relates Chemistry to everyday life and to the chemical industry.

## EXAMINATION

**3 hour written paper in June** – both HL and OL.  
A total of 8 questions must be answered, 2 of which must be from Section A.

- Section A has 3 questions on the Mandatory Experiments.
- Section B has 8 questions on the course in general.

All questions carry 50 marks and some have choices within the questions.

## RECOMMENDATIONS

Students should:

- Have reasonable mathematical ability, especially if taking Higher level Chemistry for Leaving Cert.
- Be reasonably good at problem solving.

## REQUIREMENTS FOR COURSES

A Higher level H4 in Leaving Cert. Chemistry is required for:

⇒ Human Nutrition in DIT

A Higher level H5 in Leaving Cert. Chemistry is required for:

⇒ Veterinary Medicine in UCD

Chemistry is strongly recommended for any Third Level course with scientific content, eg: Medicine, Dentistry, Pharmacy, Food Science, Laboratory Technician, Dietician, Forensics, Genetics...etc.

Chemistry is considered the hardest of the three Leaving Cert. Science subjects to pick up at Third Level if you have not studied it to Leaving Cert. level.

## POSSIBLE CAREER OPTIONS

- \* Medicine
- \* The Chemical Industry
- \* The Pharmaceutical Sector (*Ireland has one of the highest numbers of Pharmaceutical companies in the world – all offering excellent job opportunities for Chemistry graduates*)
- \* The Public Sector Laboratories
- \* Forensic Science
- \* Environmental Science



# PHYSICS

## SYLLABUS

The syllabus explores light and sound mechanics, heat and temperature mechanics, radioactivity and particle physics in real life situations (eg: car speed and safety/speed traps, how a motor works, why diamonds sparkle...etc)  
There are 24 Mandatory Experiments and the breakdown of the course is:

- ◆ Pure Science 70%
- ◆ Application of Science 22.5%
- ◆ Science for Citizens 7.5%

## EXAMINATION

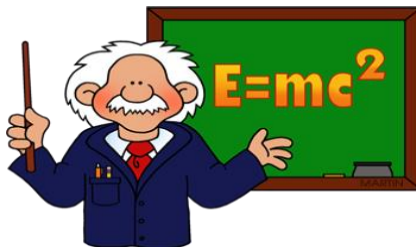
**3 hour written paper in June** – for both Higher and Ordinary levels

- Section A (120 marks) Answer 3 from 4 questions on Mandatory Experiments
- Section B (180 marks) Answer 5 from 8 questions on theory, problem solving and experiments

## RECOMMENDATIONS

A student with good mathematical ability does well in physics. Physics requires dedication and consistency. Students therefore should:

- Be hardworking, attentive and consistent
- Enjoy problem solving
- Enjoy both theoretical and practical work



## REQUIREMENTS FOR COURSES

Physics is required to study Theoretical Physics at TCD and for Electrical Engineering at UCC.

Physics is also an important subject for Medicine, Physiotherapy, Radiography, Engineering, Architecture and Construction Studies.

## POSSIBLE CAREER OPTIONS

- \* Engineering
- \* Radiography
- \* Physiotherapy
- \* Electronics
- \* Architecture

Useful for trades such as:

- \* Electrician
- \* Plumber
- \* Carpenter

Physicists can be found in all types of careers not necessarily restricted to Physics and Engineering. The problem solving skills attained are much valued in areas such as finance, education, aviation...etc.

# BIOLOGY



## SYLLABUS

There are 20 Mandatory Experiments that must be completed. The syllabus covers the following areas:

- ◆ Human Biology
- ◆ Plant Biology
- ◆ Ecology
- ◆ The Cell
- ◆ Enzymes
- ◆ Genetics
- ◆ Microbiology
- ◆ Reproduction

## EXAMINATION

**3 hour written paper in June** – for both Higher and Ordinary levels

- Section A (25%) – 6 Short questions, do 5
- Section B (15%) – 3 Experiments, do 2
- Section C (60%) – 6 Long questions, do 4

## RECOMMENDATIONS

Biology is a subject requiring memory and understanding. Therefore, students taking this option should:

- Realise that this is a long course (45 Chapters)
- Realise there is a lot of memory work involved
- Be disciplined about learning a lot of material

## REQUIREMENTS FOR COURSES

Biology is often a core subject in Science related courses

## POSSIBLE CAREER OPTIONS

- \* Nursing
- \* Medicine/ Veterinary Medicine
- \* Physiotherapy
- \* Sports Science
- \* Laboratory Technician
- \* Forensics
- \* Teaching
- \* Food Science
- \* Genetics
- \* Research
- \* Water Analysis
- \* Beauty Therapy

# HOME ECONOMICS



## SYLLABUS

There are four sections for examination:

- ◆ Food Science & Nutrition 45%
- ◆ Consumer Studies & Home Management 25%
- ◆ Social Studies 10%
- ◆ Elective 20%

## EXAMINATION

**Practical** component worth 20% to be completed by October of 6<sup>th</sup> Year

**5 Tasks/Assignments** completed in 5<sup>th</sup> Year and written up in a **Course Assessment Journal**

**Written paper** worth 80%

- Short questions on all aspects of the course
- Compulsory question on Food Science & Nutrition
- Compulsory question on Social Studies
- All other questions are of choice

## RECOMMENDATIONS

Students taking Home Economics for Leaving Certificate should:

- Enjoy the Chemistry section of the Junior Cert. Science course
- Attend regularly to complete Practical Work

## REQUIREMENTS FOR COURSES

Home Economics is **not** treated as a Science subject for matriculation

## POSSIBLE CAREER OPTIONS

- \* Food Industry
- \* Chef/Culinary Arts
- \* Childcare
- \* Nursing
- \* Social Work
- \* Hairdressing
- \* Hotel Management
- \* Teaching
- \* Interior Design
- \* Tourism
- \* Beauty Therapy (sometimes accepted by colleges instead of Biology)

# CONSTRUCTION STUDIES

## SYLLABUS

The Construction Studies syllabus involves:

- ◆ Practical work
- ◆ Scale drawing and sketching
- ◆ Communicating information in Graphic Form
- ◆ Safety requirements are a key aspect of the Leaving Cert. programme in this subject area

## EXAMINATION

**Practical Project and Folio** 20% [HL]

25% [OL]

**Skills Test** 20% [HL]

25% [OL]

**Written Examination** 60% [HL]

50% [OL]

NOTE: The practical skills test is a four hour exam that takes place in May of 6<sup>th</sup> Year. Projects must include a selection of joinery, wood turning, laminating, wood carving and veneering.



## RECOMMENDATION

Students of Construction Studies should:

- Be serious
- Be practical
- Be good listeners
- Be good attenders
- Have a background in Materials Technology (Wood), Technical Graphics or Metal Work

## REQUIREMENTS FOR COURSES

None

## POSSIBLE CAREER OPTIONS

- \* All trades
- \* Practical self-employment
- \* Third Level in the Building industry
- \* A useful life-skill for most professions

# ENGINEERING

## SYLLABUS

The syllabus covers:

- ◆ Health and Safety
- ◆ Classification & Origin of Metals
- ◆ Structure of Metals & Plastics
- ◆ Material testing
- ◆ Joining
- ◆ Machining – drilling, milling, bandsawing
- ◆ Measurement
- ◆ Manufacturing
- ◆ Processes
- ◆ New Technologies
- ◆ Electronics

## EXAMINATION

- Nov – March **Project – 150 marks** [HL and OL]
- May **Practical 6 hour exam – 150 marks** [HL and OL]
- June **Written paper – 3 hours – 300 marks** [HL] **200 marks** [OL]



## RECOMMENDATIONS

It is advisable for students considering Engineering at Leaving Cert. to have taken Engineering or Tech. Graphics for Junior Cert.

## REQUIREMENTS FOR COURSES

None

## POSSIBLE CAREER OPTIONS

- \* General operative in a factory
- \* Mechanic
- \* Welder
- \* Plumber
- \* Electrician
- \* Technician
- \* Engineer – mechanical, production, electronic, electrical, material...etc

# TECHNOLOGY

## SYLLABUS

Technology for the Leaving Cert involves using the design process to work through a task or problem in order to arrive at a solution, in the form of an artefact or finished product.

The syllabus covers:

- ◆ A Process of Design
- ◆ Project and Quality Management
- ◆ Materials and Production
- ◆ Communication and Graphic Media
- ◆ Information and Communications Technology
- ◆ Structures and Mechanisms
- ◆ Energy, Electricity, and Electronics

**and options, of which students study two**

- ◆ Electronics and Control
- ◆ Applied Control Systems
- ◆ Information and Communications Technology
- ◆ Manufacturing Systems
- ◆ Materials Technology

## EXAMINATION

There are two parts to the LC Technology Exam

- Student Coursework consisting of an artefact and a design folio. A brief for this coursework is issued to schools each year by the SEC (50%)
- Written Exam (50%) - 2 hours for OL and 2.5 hours for HL.



## RECOMMENDATIONS

Students do not need to have taken Technology at Junior Cert .

It would however be an advantage if students had taken one of Tech Drawing, Wood Technology or Technology.

## REQUIREMENTS FOR COURSES

None

## POSSIBLE CAREER OPTIONS

- \* Product Design
- \* Engineering
- \* Architecture
- \* Teaching
- \* Medical Devices
- \* Mobile and Assistive Technologies
- \* Packaging and Display
- \* Furniture
- \* Toys and Entertainment
- \* Sports and Lifestyle Equipment

# ART



## SYLLABUS

The syllabus covers:

- ◆ Figure and Observation Work
- ◆ Drawing forms the basis of the whole course, dealing with studies based on the figure and observation which serve as a store of visual images necessary for work in imaginative composition, design and craftwork.
- ◆ Imaginative Composition: This involves exploration of composition and media – creating mood, drama, focus...etc.
- ◆ Design: This involves learning to make an idea suitable for a particular purpose; eg: advertising or craftwork, working on layout, lettering, effective use of colour...etc.
- ◆ History and Appreciation of Art: This part of the course is in three sections:
  1. Irish Art History – from the Stone Age to the Present Day.
  2. European Art History – from 1000 AD to the Present Day.
  3. General Appreciation – covering areas including advertising analysis, TV and film special effects, design and layout for exhibition...etc.

**Museum and Gallery visits are an integral part of this course.**

## EXAMINATION

There are proposed changes to be made for Leaving Cert. Art whereby the Craft and Design AND the Imaginative Composition practical elements will now be worth 100 marks each. Rather than being two timed exams of 2.5 hours and 5 hours respectively, these components of the course will now be completed in the form of in-school project work. All work will be verified by the Art teacher. The time specifications and marking schemes for these elements of the course are yet to be announced.

## RECOMMENDATIONS

Students taking Leaving Cert. Art must:

- Have a genuine interest in and a mature attitude to the broad subject of Art.
- Be capable of working consistently on major pieces of art work both in class and at home – i.e: patience is essential.
- Have an interest in History.

## REQUIREMENTS FOR COURSES

For Portfolio Preparation / Art College applicants: The Art department works with students who wish to submit work to Art Colleges and pursue a career in Art.

## POSSIBLE CAREER OPTIONS

- \* Animation
- \* Theatre, TV and Film
- \* Public Service
- \* Science / Medicine
- \* Gallery / Museum

# Design Communications Graphics

## SYLLABUS

- ◆ All course work is drawn using instruments and freehand sketching.
- ◆ Over the course of two years, students compile a portfolio of drawings which will include Building applications, Engineering applications, solid drawing and roof geometry.
- ◆ There is also a compulsory CAD design project.

## EXAMINATION

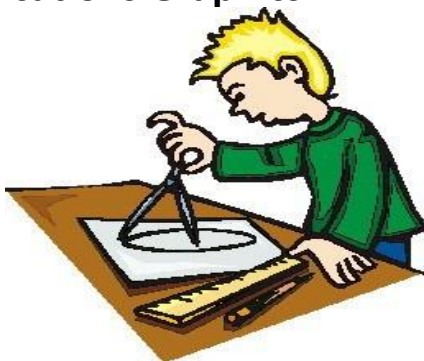
There are two assessment components:

- A Research and Design project – 40%
- A 3 hour exam in June – 60%

## RECOMMENDATIONS

Technical Drawing is a subject requiring problem solving abilities. Therefore, students taking DCG for Leaving Cert. should:

- Have good levels of concentration and commitment
- Be neat
- Be able to pay attention to detail
- Be willing to work hard
- Capable of working on their own initiative



## REQUIREMENTS FOR COURSES

None

## POSSIBLE CAREER OPTIONS

- \* Architecture
- \* Engineering
- \* Quantity Surveying
- \* Draughtsman
- \* Construction Technician
- \* All apprenticeships



# MUSIC



## SYLLABUS

There are three core elements in the Leaving Cert. Music syllabus:

- ◆ Listening (25%): Students must listen to a wide variety of music including:
  - ⇒ Set Works ranging from Bach to The Beatles/Queen
  - ⇒ Irish music – old and new
  - ⇒ Other styles including pop, rock, classical and jazz
- ◆ Composing (25%): Students learn the basic elements of composition with a focus on:
  - ⇒ 16 bar melody
  - ⇒ Adding harmony to an existing melody
- ◆ Performing (25%):
  - ⇒ Each student prepares 2-8 pieces of music to be performed as a Solo Performance and/or as a member of a group.
  - ⇒ Music Technology – ie: using the computer to write and play music

## EXAMINATION

There are three parts to the exam:

- Performance (March/April of 6<sup>th</sup> Year)
- Listening Paper (1½ hours in June)
- Composition Paper (1½ hours in June)

At Higher level, students will select one of the syllabus areas and specialise in it. If a student is a good performer, studying music would be worth considering as performance can be worth up to 50%.

## RECOMMENDATIONS

While it is not necessary to have Junior Cert. Music, it is useful. To study Music as an option for Leaving Cert. It is necessary to:

- Have the ability to perform vocally and/or play an instrument
- Have some basic knowledge of Music Theory
- Be willing to work very hard and participate in musical events during the school year.

## REQUIREMENTS FOR COURSES

Leaving Cert. Music is a requirement to study Music at TCD and Maynooth.

## POSSIBLE CAREER OPTIONS

- \* Music teacher – secondary school, college, privately
- \* Primary school teacher
- \* Music Therapist
- \* Performer/Professional musician
- \* Sound Engineer
- \* Music producer/Director

# POLITICS

## SYLLABUS

The syllabus has 4 Strands:

- ◆ Power and Decision Making – in school, national and European level.
- ◆ Active Citizenship – effectively contributing to communities.
- ◆ Human Rights and Responsibilities – in communication with others, in Europe and world.
- ◆ Globalisation and Localisation – identity, sustainable development

## EXAMINATION

- Written Examination 80% of total marks
- Project 20% - based on a brief issued by the SEC each year. This is based on a Citizenship Project



## RECOMMENDATIONS

Students considering Politics and Society for Leaving Cert. must be willing to build upon the following skills:

- Discussion
- Analysis
- Application
- Reflection
- Informed decision making
- Debating

## REQUIREMENTS FOR COURSES

None

## POSSIBLE CAREER OPTIONS

- \* Politician
- \* Law
- \* Sociology
- \* Anthropology
- \* Media

# LEAVING CERTIFICATE APPLIED



Opening Up New Options  
(Places limited to 20)

## What is the Leaving Cert. Applied?

This is a two year Leaving Certificate programme available to students who wish to follow a practical or vocationally oriented programme.

## What does 'Applied' mean?

The word APPLIED is used to describe the course because the programme is designed to allow students to apply the learning experience they gain over the 2 years of the course to practical educational tasks.

## What is different about LCA?

- ◆ It is based on the principle of continuous assessment
- ◆ It is a distinct and self-contained programme
- ◆ It is a practical programme
- ◆ It is a unique form of assessment
- ◆ It provides a broad and balanced curriculum
- ◆ It provides short-term goals
- ◆ It includes a work experience element.



## Course Design

### Sessions - ½ year blocks

This is in both Year 1 and Year 2 of LCA:

- Session 1: September – Christmas
- Session 2: January – June

### Modules

- Students complete modules in each subject
- One module is generally 40 hours over a session
- There are approximately 10 modules per session
- There is a total of 40 modules over the 2 years

### Student Tasks (7 over 4 sessions)

- A Task is a large project of at least 10 hours of independent work
- It requires practical application of skills
- It involves integration across the course

## Curriculum Courses

### Vocational Preparation

⇒ Vocational Preparation and Guidance

### Vocational Education

- ⇒ Mathematical Applications
- ⇒ Vocational Specialisms (2 from the list)
- Hotel, Catering and Tourism
  - Graphics and Construction Studies
  - Office Administration and Customer Care
  - Music
  - Engineering
- ⇒ Information Technology

## General Education

- Arts Education
- Social Education
- Languages – Irish and Italian
- Leisure and Recreation

## Assessments

**There are THREE modes of assessment in LCA:**

- \* Satisfactory Completion of Modules
- \* 7 Tasks (involving interviews)
- \* Terminal Examination

## Terminal Examination

- ⇒ English and Communications
- ⇒ Vocational Specialisms (2)
- ⇒ Mathematical Applications
- ⇒ Languages (Irish and Italian)
- ⇒ Social Education

## Credits

Key Assignments	62
(from each module)	
Tasks	70
Exams	<u>68</u>
	200

## Certification

This is awarded at three levels:

Pass	120-139 credits
Merit	140-169 credits
Distinction	170-200 credits



## Attendance

- Students must have 90% attendance which means that they are only allowed 17 days absence during the academic year
- Certified absences will be excused

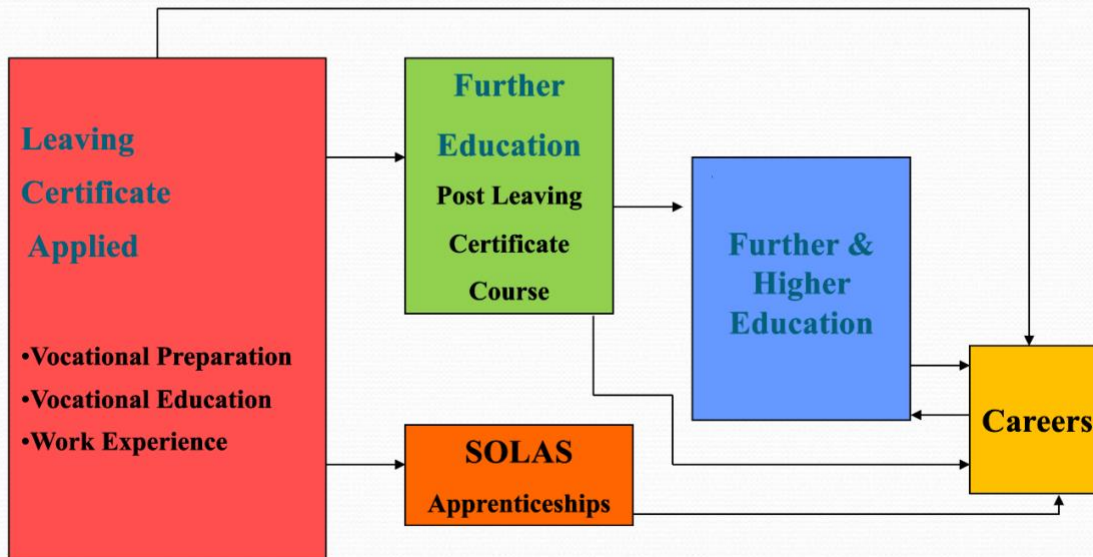
## Punctuality

- ½ day lost for each late a student receives
- Lates excused by a note from parents will be accepted.

# Opening up New Options



## The Leaving Certificate Applied Route Map





**Transition Year gives students the opportunity to:**

- ◇ Try new subjects / gain from new experiences
- ◇ Enjoy a year free from exam pressure
- ◇ Develop intellectually, personally, socially and vocationally
- ◇ Develop new skills of research and study
- ◇ Experience new learning methods
- ◇ Do Work Experience within an area of choice

## What is Transition Year?

Transition Year is a one year programme between Junior Cycle and Senior Cycle

## Why do Transition Year?

Transition Year encourages:

- Personal and Social development
- Students grow in independence
- The year fosters academic achievement
- It prepares students for Leaving certificate, further study and adult life

## Who should do Transition Year?

Students who fit into the following categories:

- Very young for leaving certificate
- Those who are finding study difficult
- Those who have missed a lot of time for any number of reasons

## The Aim of Transition Year

Transition Year aims to:

- Recognise and develop students' talents
- Develop the attitudes needed for successful learning
- Learn how to work co-operatively with their classmates and teachers
- Become aware of their strengths and learn to develop them recognise their weaknesses and learn how to overcome them

## Work Experience

- ⇒ Two weeks in November & February
- ⇒ Classroom preparation
- ⇒ Shows the links between the school and the working environment
- ⇒ Valuable experience for the students

## Assessment in Transition Year

- ⇒ Summative Evaluation – portfolio of performance graded by the teacher
- ⇒ Some written, practical, oral and aural assessments
- ⇒ Report from Work Experience
- ⇒ Projects, portfolio and exhibition of work
- ⇒ Rating scale on levels of co-operation, initiative, work rate and meeting deadlines
- ⇒ Taking responsibility for learning





## Learning procedures in TY

- ◆ Activity based learning
- ◆ Integration of subjects
- ◆ Team teaching approaches
- ◆ Group work, discussions, debate, interview and role play
- ◆ Guest speakers and Seminars
- ◆ Study visits and field trips
- ◆ Work Experience and Community Service



## School Expectations

- All regular school rules apply in transition Year
- 100% Attendance and Punctuality
- Commitment to Work
- Co-operation with teachers and fellow students
- Participation in all school organised activities
- Uphold the good reputation of the school on all activities
- Act in a respectful manner at all times

## Conclusion

Regardless of programme or subjects chosen, our aim in HFCS is to encourage students by helping them to acquire the skills and attitudes needed for independent learning and to be able to reach their full potential.

[illegible]